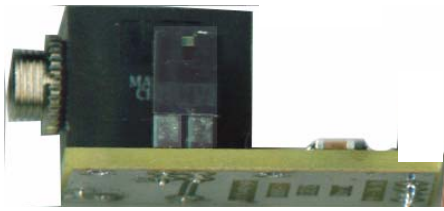
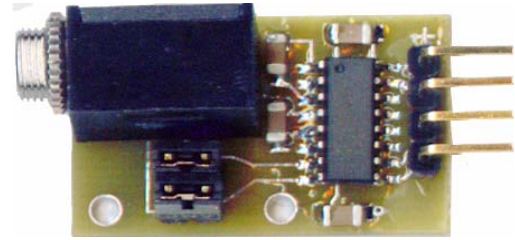


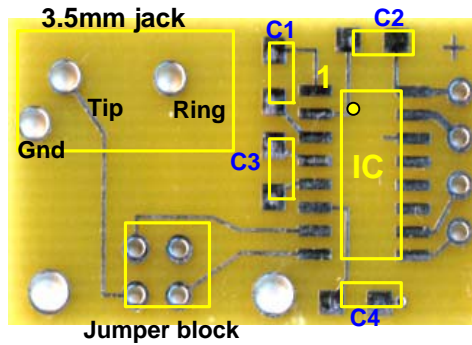
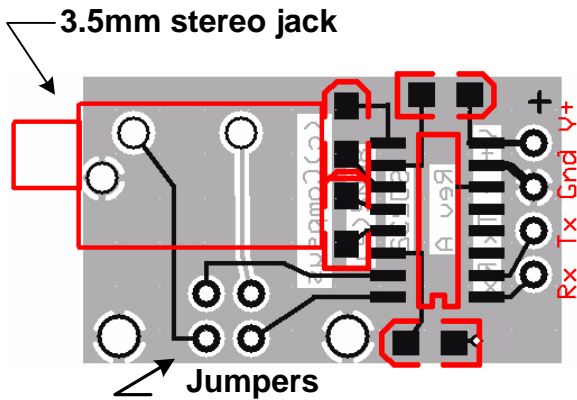
STR232 Rev 2



A very small TTL to RS232 adapter with a 3.5mm jack. Jumpers allow swapping the Tip and Ring connections. Available as a TTL 5v IC232 or TTL 3.3v IC3232

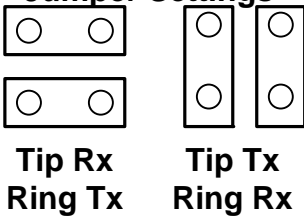


DO NOT REVERSE POLARITY!
The IC will be damaged



TTL I/O
 V+ 3.3v IC3232 (Max 5v)
 5v IC232 (Max 6v)
 Gnd
 Tx ← Out
 Rx → In

Jumper Settings

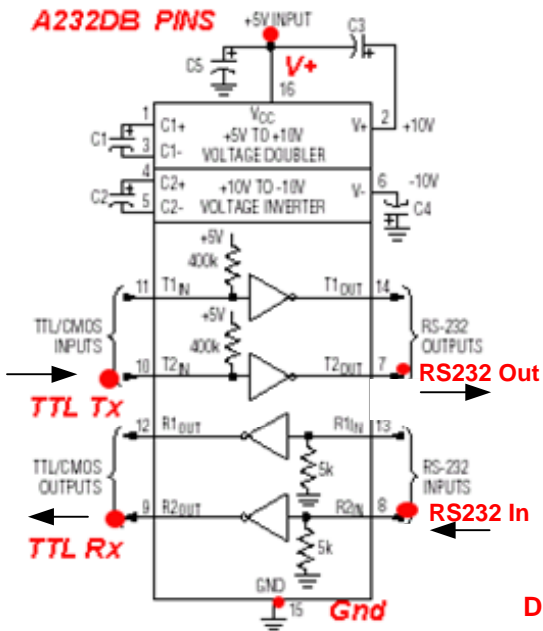


PARTS

3.3v version	5v version
C1-C4 -- 0.1uf	C1-C4 -- 1uf
IC ----- IC3232	IC ----- IC232
3.5mm jack and printed circuit board	

Assembly Notes

Use quality solder approx .020" dia and a fine point soldering iron approx 20w. Carefully mount the SOIC chip first observing correct orientation (Pin1 is the 'banded' or 'dimpled' end) . Apply only tiny amounts of solder if needed. Next, install the four SMD non-polar capacitors. Finally mount the 3.5mm jack. Carefully insert the three tabs into the matching three holes on the pcb. Hold the jack by its case and align it parallel to the pcb edge and then solder the three tabs.



Disclaimer and Terms of Agreement

As with any kit, only the individual parts supplied are guaranteed against defects and not the user assembled unit. All kit parts are purchased from reputable sources such as Digikey Inc, Allied Electronics and Mouser Inc, however, should a kit part be ascertained to be defective it will be replaced at no charge within 30 (thirty) days of the purchase date. Beyond that, COMPSys Workbench and / or the COMPSys developer(s) assume no liability and WILL NOT be held liable nor be held responsible wholly or in part for any damages caused by the construction of and / or use of their products sold .