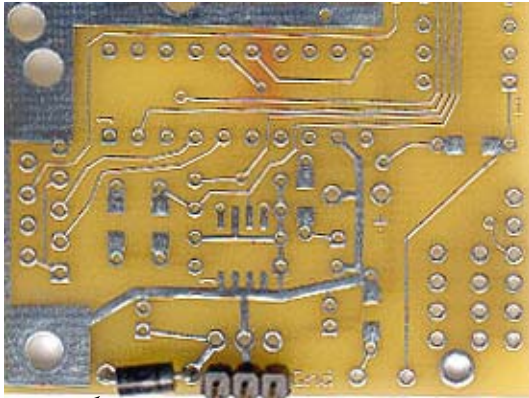


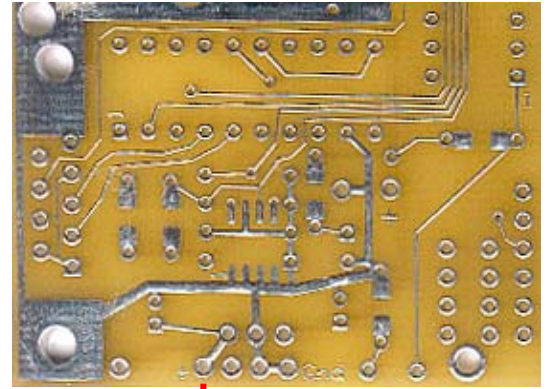
MMSD3 Reverse voltage supply protection option

With protection diode



An optional 1N4001 or equiv diode is provided if one requires reverse supply voltage protection. On the left is shown how to install the diode. On the right is the board without the diode

Without protection diode



1N4001 diode in place. Note: The cathode (banded end) is close to the positive (+) supply lead



Supply voltage (7-16vdc)
The 2 farthest right pins are both ground