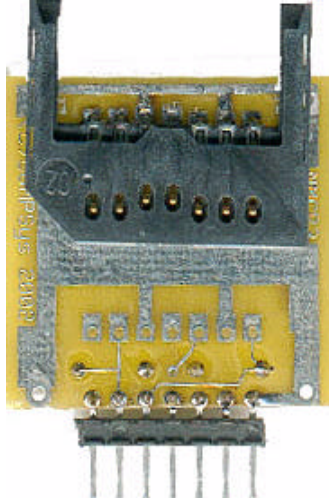


# MMC-ADP Adapter Assembly

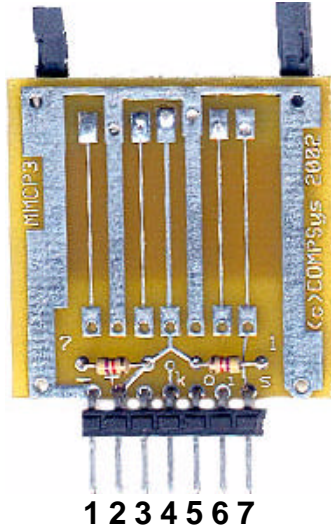
Unshielded plastic socket mounts on bottom side of PCB

Unshielded plastic socket (either black or ivory) shown mounted on the **BOTTOM SIDE** of the PCB.



Unshielded plastic socket as seen from the **TOP** side of the pcb

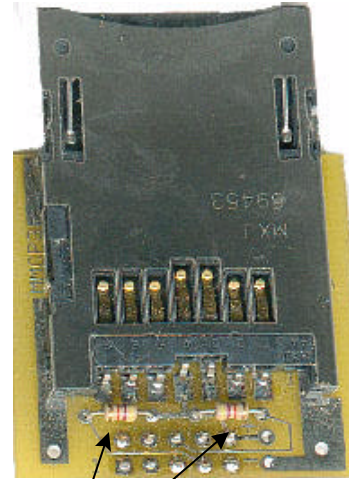
- 1 - Gnd
- 2 - 3.3v
- 3 - No connection
- 4 - SCK (CLOCK)
- 5 - SO (MISO)
- 6 - SI (MOSI)
- 7 - SS (CHIP SELECT)



Shielded plastic socket mounts on top side of PCB

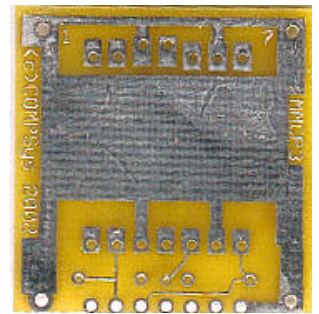
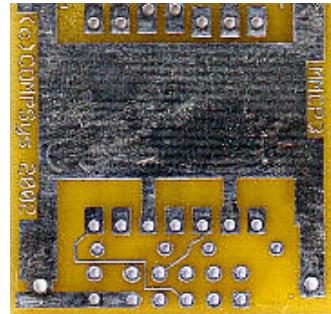
Shielded metal socket shown mounted on the **TOP SIDE** of the PCB.

- 1,2,3 & 4 - No connection
- 5 - SS (CHIP SELECT)
- 6 - SI (MOSI)
- 7 - SO (MISO)
- 8 - SCK (CLOCK)
- 9 - GND
- 10 - 3.3V



2 4 6 8 10  
1 3 5 7 9

2 - 4.7k resistors



Bottom side of 1x7 and 2x5 pcs

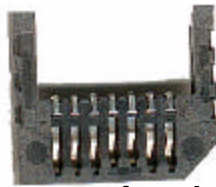
## Assembly Notes:

Please use thin silver-based solder (0.022" dia or less) and 15-20W fine point iron. You may mount the resistors on either the top or bottom of the pcb. When mounting the sockets please make sure that you align the socket 'fingers' with the pcb pads properly. For the unshielded plastic socket see the note below. Melt a bit of solder on each of the pcb pads. Hold the socket in position and then carefully apply heat to each of the socket fingers. if needed, apply a little solder to each. Double check your work for solder bridges and splashes.

## Unshielded socket preparation



Top of socket



Bottom of socket



Piece of insulation (electric tape or similar)



Insulator tape placed over the bottom side of the socket to prevent the fingers from touching the ground plane of the pcb