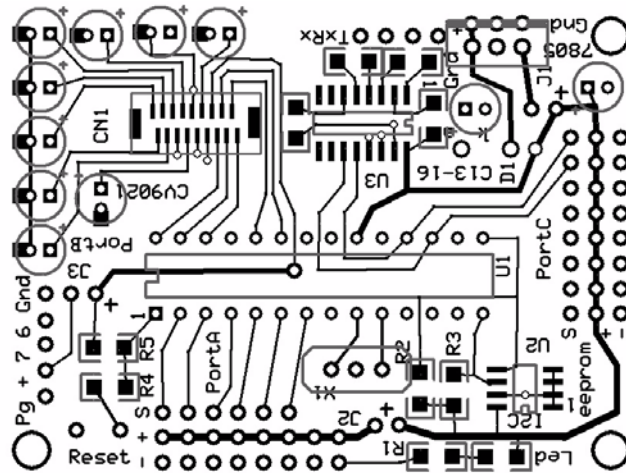
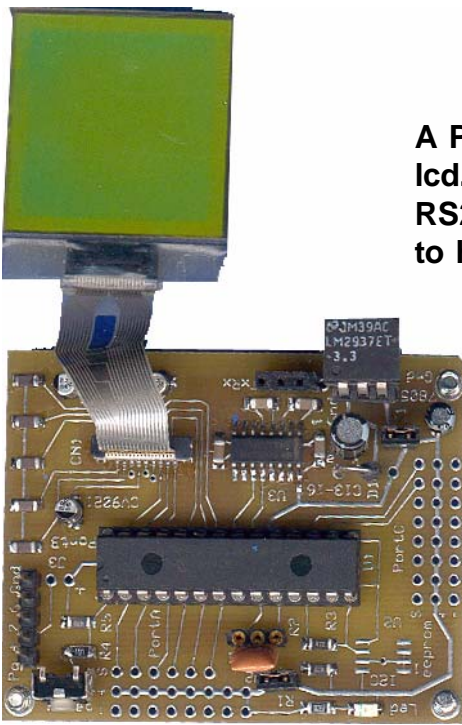


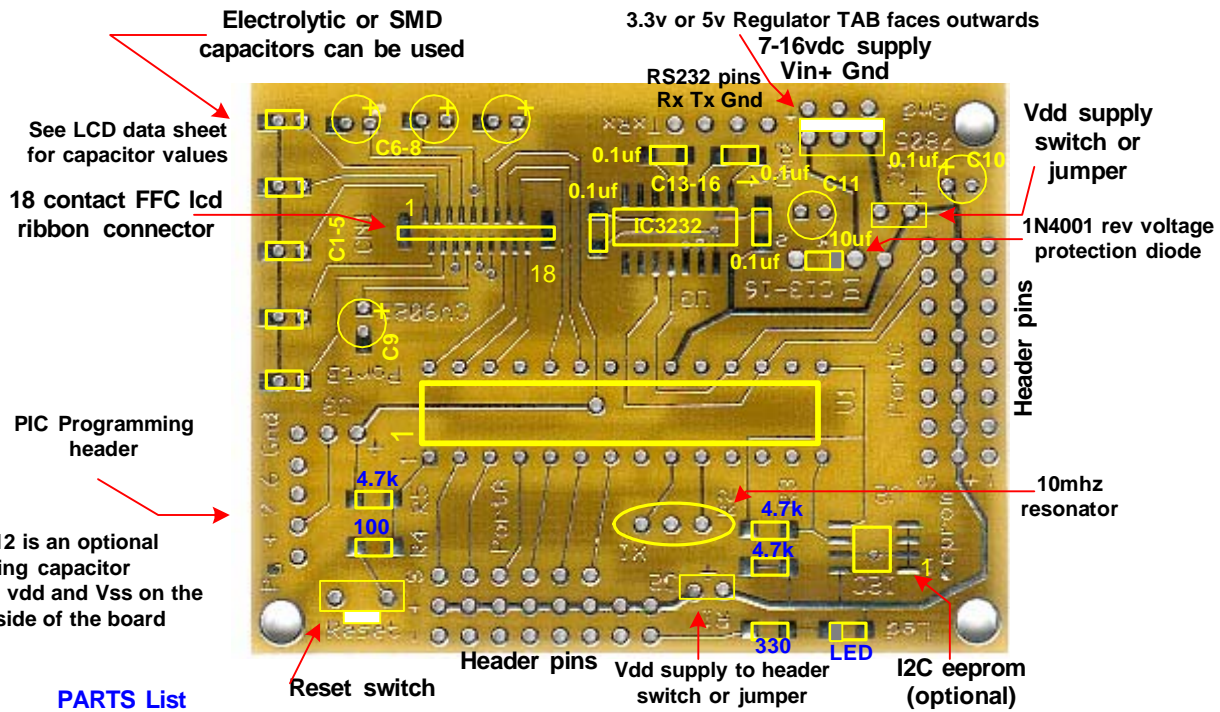
CV9021 LCD interface Ver 1.0.0

A PIC microcontroller based adapter for a Clover CV9021A COG lcd. The board also includes a 3.3v power regulator, Max3232 RS232 IC, and an optional I2C eeprom. All Unused pins brought to headers and can be used for other purposes.



Shown assembled (without the optional eeprom)

PCB layout (top side)



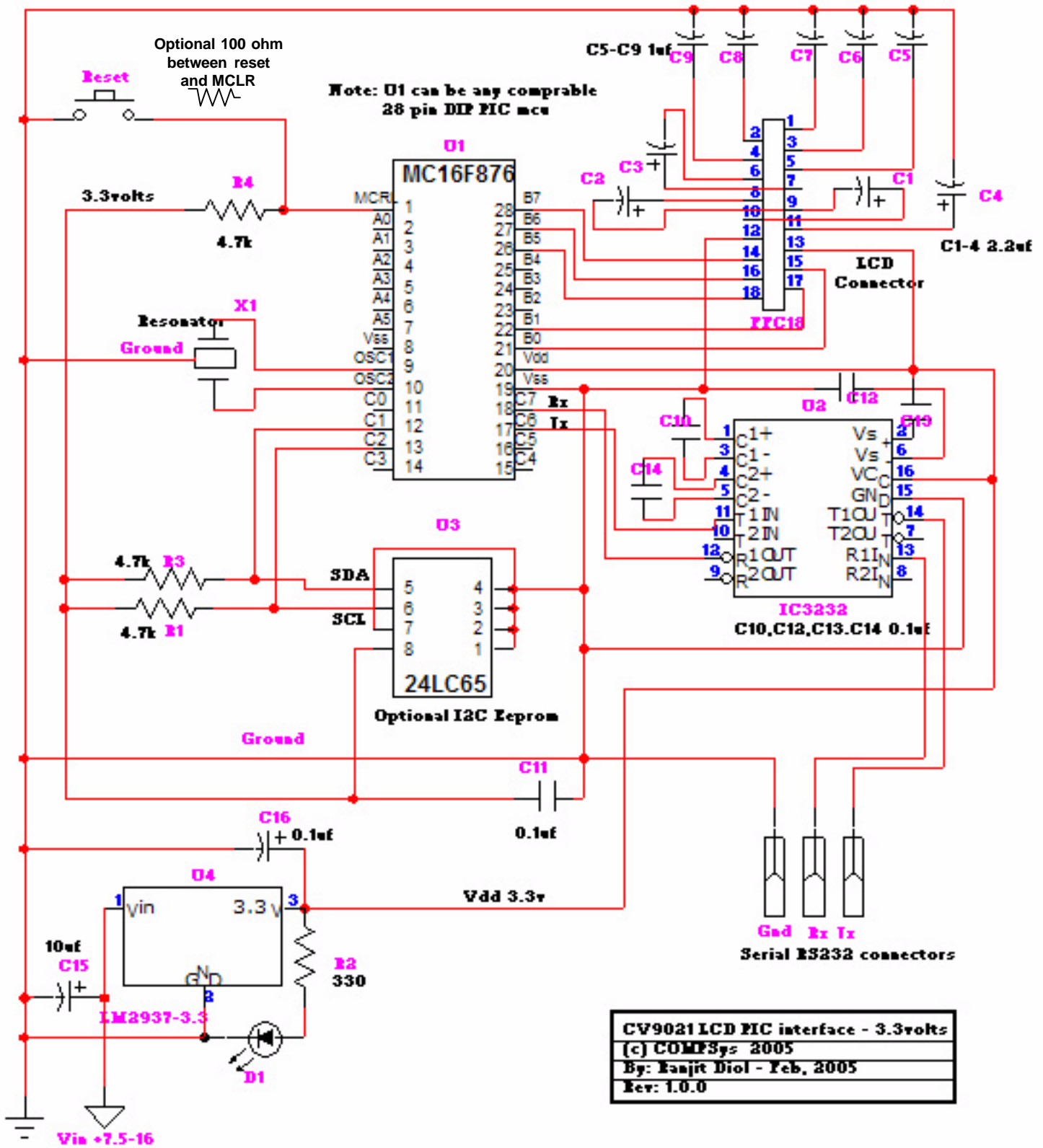
PARTS List

R1 - 330	C13-16 - 0.1uf	Resonator - 10mhz
R2,R3,R5 - 4.7k	D1 - 1N4001 diode	FFC 18 contact connector
R4 - 100	LED	Misc:
C1-C9 See LCD data sheet	LM2937 3.3v reg	Jumper caps and headers
C10 - 0.1uf	Max3232 3.3v RS232 IC	
C11 - 10uf	24CL256 eeprom (optional)	
C12 - 0.1uf	PIC16F876	

Disclaimer and Terms of Agreement

As with any kit, only the individual parts supplied are guaranteed against defects and not the user assembled unit. All kit parts are purchased from reputable sources such as Digikey Inc, Allied Electronics and Mouser Inc, however, should a kit part be ascertained to be defective it will be replaced at no charge within 30 (thirty) days of the purchase date. Beyond that, COMPSys Workbench and / or the COMPSys developer(s) assume no liability and WILL NOT be held liable nor be held responsible wholly or in part for any damages caused by the construction of and / or use of their products sold .

PIC CV9021A LCD controller 3.3volt Schematic



NOTE: Subject to change without notice. Component numbering may not match the pcb