

AD321B Adapter Board with DC-DC inverter mounted

3 10mfd caps

Module Pin 1

To GLIPIC Board

Module Pins 2,3,4*

*Only Pin 4 of the module output is used (-24v)

100mfd cap

20k POT
(can be mounted on top or bottom of pcb)

Pre-assembled DC-DC inverter. See module schematic below

Observe polarity of capacitors

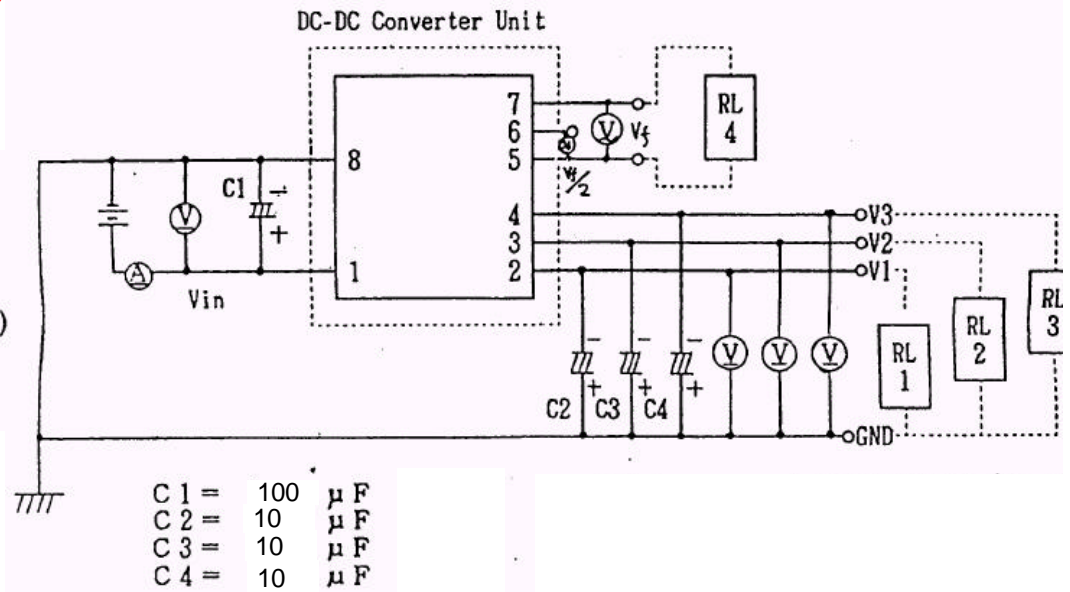
Module Pin 8

To G321D LCD PINS

Square pcb pads are + (positive)

DC-DC Module Pins

Pin #	Function
1	Input + 5Vdc
2	Output -10Vdc
3	Output -19Vdc
4	Output -26Vdc
5	Output 6Vac (between #5-#7)
6	Center tap
7	Output 6Vac
8	GND

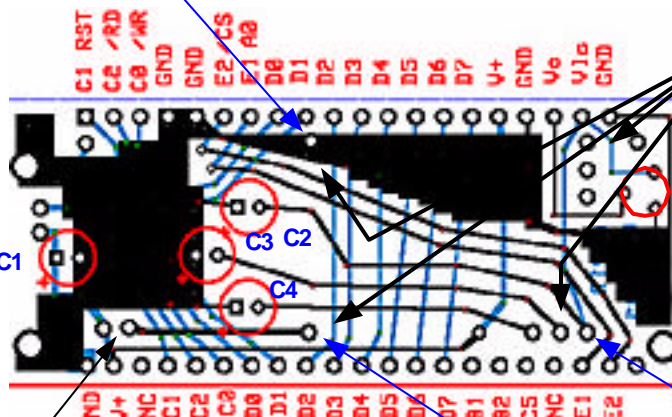


PCB Layout Top view

Pin 8 of DC-DC module (Gnd)

To G321D LCD PINS

Mounting holes for the DC-DC inverter module (Mounts only from the backside of the pcb)



10k or 20k POT
(can be mounted on top or bottom of pcb)

Power supply jumper pins (2 pins)
Can be mounted on either side

To GLIPIC Board

Pin 4 of DC-DC module (-24v)

Pin 1 of DC-DC module (Input 5v)