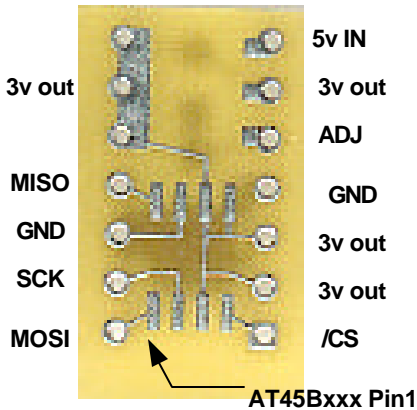


AT45B DIP 14 carrier



Designed for 5volt applications which require large amounts of storage. The Atmel AT45Bxxx dataflash SPI devices can store 2 to 8mbits in an 8pin device. The LM317 provides the 3v volts for the dataflash. The data lines are 5v tolerant and do not require voltage translation. The AT45B carrier has a standard DIP14 footprint which makes it easy to incorporate in any application.

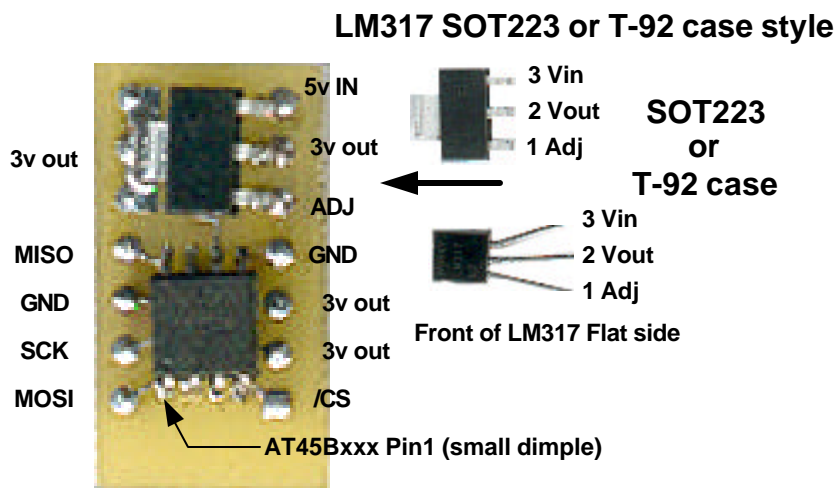
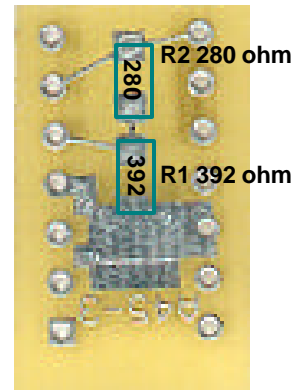


Fig 1 Top side of pcb

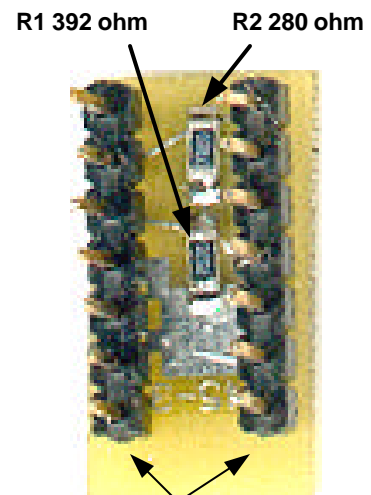


Fig 2 Bottom side of pcb

Parts:

- 1 - Printed Circuit Board
- 1 -AT45Bxxx DataFlash SOIC (4mb or 8mb)
- 1 -LM317 (SOT223 or T92 case)
- 1- 392 ohm chip resistor
- 1- 280 ohm chip resistor
- 2 - 1x7 headers

Construction hints:

Tweezers and a magnifying glass are very helpful tools.

Orient the parts carefully and double check before soldering! Apply solder very sparingly. Use a fin point soldering pencil and thin solder.

Assembly Steps

- 1 - Solder the 392 and 280 ohm resistors on the bottom side of the pcb. (Fig 2)
- 2 - Solder the two 1x7 headers (Fig 2)
- 3 - Carefully solder the AT45Bxxx, make sure to position the legs properly on the pcb pads. (Fig 1)
- 4 - Solder the LM317. It will be either an T-92 or SOT223 case. Make sure to orient the IC correctly. (Fig 1)

**DO NOT REVERSE
POLARITY!**

Disclaimer and Terms of Agreement

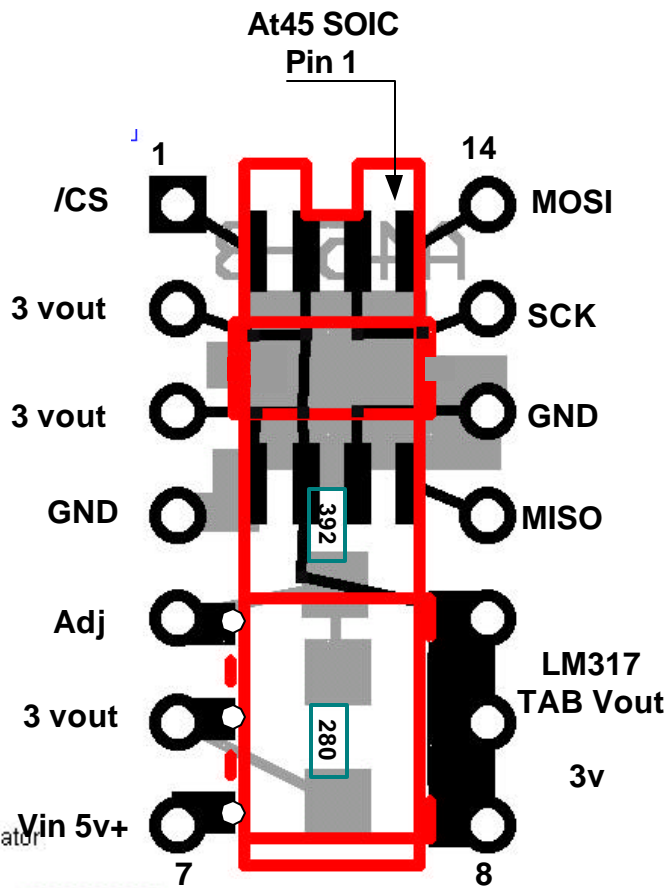
As with any kit, only the individual parts supplied are guaranteed against defects and not the user assembled unit. All kit parts are purchased from reputable sources such as Digikey Inc, Allied Electronics and Mouser Inc, however, should a kit part be ascertained to be defective it will be replaced at no charge within 30 (thirty) days of the purchase date. Beyond that, COMPSys Workbench and / c the COMPSys developer(s) assume no liability and WILL NOT be held liable nor be held responsible wholly or in part for any damages caused by the construction of and / or use of their products sold .

AT45B DIP 14 carrier Schematic and printed circuit board layout.

**DO NOT REVERSE
POLARITY!**

AT45517

AT45B SPI DataFlash 14pin DIP Carrier with 3.3v Regulator



**14 pin DIP
Carrier**
Black is TOP side, Gray is
BOTTOM side.
Resistors are mounted on the
bottom side

